

The Population of Rutland Parishes 1795-2001

Peter Tomalin

Contents:

Synopsis	3
Introduction	3
The Population Table	3
The Graphs	3
The Increase and Decrease of Parish Populations 1795-2001	3
Factors contributing to Population Variations	4
Summary	5
Acknowledgements	6
Main Population Table	7
Increase and Decrease of Parish Populations 1795-2001 (Table)	8
Burley/Stretton (Prisons)	9
Cottesmore, Edith Weston & Horn (Service personnel)	10
Oakham & Uppingham population graph 1795 - 2001	11
Villages with a population increasing by more than 200%	12
Villages with a population decreasing by more than 50%	13
Rutland population graph	14
Parish Graphs (See list right to select a parish)	15 - 23

Selecting a blue link on this page will take you directly to the page or graph you select

[Click here to download the main data table in MS Excel format](#)
[Click here to download the main data table in ods format](#)

Topographical Contents

Ashwell	Lyddington
Ayston	Lyndon
Barleythorpe	Manton
Barrow	Market Overton
Barrowden	Martinsthorpe
Beaumont Chase	Morcott
Belton	Normanton
Bisbrooke	North Luffenham
Braunston	Oakham
Brooke	Pickworth
Burley	Pilton
Caldecott	Preston
Clipsham	Ridlington
Cottesmore	Ryhall
Edith Weston	Seaton
Eggleton	South Luffenham
Empingham	Stoke Dry
Essendine	Stretton
Exton	Teigh
Glaston	Thistleton
Great Casterton	Thorpe by Water
Greetham	Tickencote
Gunthorpe	Tinwell
Hambleton	Tixover
Horn	Uppingham
Ketton	Wardley
Langham	Whissendine
Leighfield	Whitwell
Little Casterton	Wing

Synopsis

This paper presents the population figures for the parishes in Rutland in the period 1795-2001. For 1795 a set of figures published in the *Gentleman's Magazine* for that year has been used. To this have been added the figures for 1801-1901, which appear in the *Victoria County History for Rutland* published in 1908, and those for 1911-2001, extracted from the national census returns. The reasons for some of the population changes are suggested.

Introduction

The population of each parish in Rutland in 1795 is taken from the *Gentleman's Magazine* 1795 ii page 650. The source of these data is not given in the magazine. The figures for the period 1801-1831 are shown in a table in the Social and Economic section of volume I of the *Victoria County History of Rutland (VCH)*. In order to provide a more complete record of the parish populations, figures from the national census returns for the period 1911-2001 have been added to the earlier data. The changes in population for each parish over the period 1801-2001 have also been presented in graphical form. The reasons for some of the variations in population have been proposed.

The Population Table

The figures for the 1795 population appeared in the *Gentleman's Magazine* for that year.

The 1801-1901 figures are taken from the *VCH* table with some amendments to the layout so that the entries are compatible with those taken from the more recent national census returns.

The corresponding data for 1911-2001 are taken from the census returns. The census return for 2001 showed some anomalies in the figures for a few parishes. These were amended following correspondence with the Office of National Statistics and as a result there are minor differences between the figures in the published census return and the figures in the table.

It should be noted that there was no census in 1941 due to the war.

The population figures are for those persons present on census day, not for the number of residents.

The Graphs

The graphs for each parish are plotted from the data in the Table and can be accessed from the [contents page](#), except where a special graph has been prepared to illustrate the effect of a factor affecting the variation in population, in which case a link is provided in the text.

The Increase and Decrease of Parish Populations 1795-2001

[A table is presented showing the increase and decrease in the population of each parish both as a change in numbers of inhabitants and as a percentage change.](#) These data are given for the whole period of 1795-2001 and separately for 1901-2001.

It will be seen that the parishes which experienced an increase in population of over 200% over the period 1795-2001 were [Cottesmore, Edith Weston, Essendine, Oakham, Ryhall, Stretton and Tixover](#). In most cases the larger part of the increase was during 1901-2001.

The parishes which showed a reduction in the population of over 50% in 1795-2001 were [Barrow, Hambleton, Leighfield, Martinsthorpe, Normanton, Seaton, Teigh and Whitwell](#). [Beaumont Chase](#) is probably in the same category but no figure is available for the population in 1795 as the census return was included with Uppingham. In 2001 there were no inhabitants in either Beaumont Chase or Martinsthorpe.

Factors contributing to Population Variations

It is of interest to know why the population of a parish has fluctuated. However, many factors may have combined to give an increase or a decrease and in such cases detailed research is necessary to present a clear picture. Such work is outside the scope of this paper, but it is possible to identify some of the Rutland events which have contributed to changes in the population.

The short term variations in individual parishes took place against the background of gradual changes affecting the whole county. As can be seen in [the graph for Rutland](#), in the period 1795-1901 there was a steady rise to a peak in 1851 and a slow decline thereafter. Rutland being primarily an agricultural county this trend is generally attributed to the rise and fall of agricultural prosperity and the increasing attraction of expanding industries in the adjacent counties after 1851. There was a small increase in 1911, and then the numbers for Rutland continued to decline until 1931 after which there was a steady increase up to 2001.

A factor felt throughout the county was the loss of life in the 1914-18 war. 525 men were killed. The total drop in population as shown by the census returns for 1911 and 1921 was 1,943, so the losses due to the war account for 27% of this total. A further part of the reduction can probably be attributed to the influenza epidemic that followed the war. After the 1914-18 war many halls and manor houses in the county were closed or demolished. At that time such houses will have employed a considerable number of domestic and estate staff and these will have had to find employment elsewhere in Rutland or outside the county.

Some local short term factors are given in footnotes to the *VCH* table for 1801-1901. At Teigh in 1841 there were 40 visitors at the annual feast. At North Luffenham in 1841 the population included 45 persons attending the anniversary of a benefit society. At Morcott in 1841 there were 48 gipsies in tents included in the total. Railway construction had an effect in the 1841 census; in both Morcott and South Luffenham railway workers were included in the totals and at Ryhall it was recorded that the return included 285 labourers employed on the works of the Great Northern Railway.

According to a note in the national census return, quoted in the *VCH* entry, the decrease of 36 persons in Greetham recorded in 1831 was attributed mainly to 'typhus fever'.

The 1939-46 war had a marked effect in some parishes, as shown in [the graph](#). The presence of airfields led to the steep increases in population of Cottesmore and Edith Weston between 1931 and 1951, and the presence of a military camp in Exton Park, in the parish of Horn, temporarily raised the population of Horn from 25 in 1931 to 174 in 1951.

The opening and closure of institutions can be contributory factors. Workhouses to cater for most parishes in Rutland were set up by the Poor Law Unions in Oakham and Uppingham in 1836 and were closed in 1930 and 1929 respectively. The one at Oakham was designed to hold 167 people, and that in Uppingham 158. Fluctuations in the population of Tixover appear to be related to the fortunes of the Grange. It became a Home Office remand home between 1948 and 1952, which presumably caused the large rise in 1951. Later there was a development of housing and flats on the site, which probably led to the peak in 2001. The opening of the prisons at Ashwell in 1955 and at Stocken in 1985 no doubt led to the large increases in the population of the parishes of Burley in 1961 and Stretton in 1991 and 2001 which can be seen [on the graph](#).

The development of housing estates in some parishes had a permanent effect and an example can be seen at Empingham where the building of an estate in 1966-71 was followed by a rise in the population from 1971.

Ironstone extraction took place in a number of parishes. The workings at Exton were operational between 1951-74 and this coincides with a peak in the population of the parish. In other parishes where the workings were developed earlier there is no similar relationship to the population returns, but increases may have occurred and been obscured by other factors. Work on Rutland Water was started in 1971 and the reservoir filled by 1976. The population of Hambleton parish, in which a number of dwellings were submerged, dropped substantially in 1971 and 1981, whereas Lyndon parish experienced a peak in 1971.

The events referred to above are selected examples of likely reasons for population variations. There are no doubt others and they are likely to occur in combination with each other.

Summary

This paper adds to the *VCH* table for the population of Rutland parishes 1801-1901 by extending the data so as to cover the period 1795-2001. The population trends have been shown in both tabular and graphical form. The results have been analysed to show the relative increases and decreases in the population of the different parishes. Some of the reasons for the rise and fall of population in the Rutland parishes have been suggested.

It is hoped that the presentation of this information will aid those who are studying local history.

Acknowledgement

The population data for the period 1911-2001 are taken from the Government reports on the census of England and Wales and are reproduced under the terms of Click-Use licence No. C2007002295.

The author is grateful to Mike Frisby for his work on the digital format of this document, tables and graphs, which form a significant part of this paper, and to Tim Clough for his editorial advice.

Date	1795	1801	1811	1821	1831	1841	1851	1861	1871	1881	1891	1901	1911	1921	1931	1951	1961	1971	1981	1991	2001	Increase	Decrease		
Ashwell	173	192	194	220	209	223	267	206	197	245	244	225	246	216	297	242	306	267	235	228	290	117		Ashwell	
Ayston	94	92	110	110	101	88	118	97	119	108	94	70	75	56	63	60	58	48	38	37	46		-48	Ayston	
Barleythorpe ¹			155			200	203	168	161				261	123	155	141	187	162	211	195	178	178			Barleythorpe
Barrow	110	129	94	105	144	142	134	146	135	120	105	110	130	126	100	78	75	47	80	60	67		-43	Barrow	
Barrowden	488	510	481	524	485	658	718	653	636	600	488	440	460	410	374	354	327	276	337	411	420		-68	Barrowden	
Beaumont Chase ²						22	18	31	23	32	16	15	17	14	6	5	14	5	0	3	0			Beaumont Chase	
Belton	415	366	340	394	400	402	408	441	405	375	372	314	297	277	283	251	262	228	295	293	335		-80	Belton	
Bisbrooke	212	196	214	223	177	211	254	266	276	268	195	204	190	137	156	148	166	159	178	190	211		-1	Bisbrooke	
Braunston	373	367	350	423	424	443	411	398	420	387	350	374	357	294	289	315	317	283	338	327	392	19		Braunston	
Brooke	99	95	104	110	95	113	102	112	88	107	102	87	80	63	64	56	37	33	30	45	67		-32	Brooke	
Burley	215	192	198	222	232	252	230	237	266	296	252	234	203	227	210	336	554	595	579	486	577	362			Burley
Caldecott	313	306	245	274	266	260	329	346	356	297	300	273	270	264	254	206	275	251	266	244	256		-57	Caldecott	
Clipsham	168	175	175	221	216	206	264	213	200	223	178	150	134	120	127	134	98	97	102	91	120		-48	Clipsham	
Cottesmore	366	416	420	497	487	528	601	481	465	409	431	422	459	363	376	1458	2445	2866	2605	2538	2332	1966			Cottesmore
Edith Weston	250	267	320	301	337	343	362	387	399	350	281	267	268	227	228	920	2064	1519	1421	1228	1042	792			Edith Weston
Eggleton	144	135	138	131	137	138	136	131	117	124	111	113	120	113	116	102	82	80	61	66	79		-65	Eggleton	
Empingham	705	778	767	759	913	914	938	921	893	823	688	654	639	559	548	668	643	844	903	800	815	110			Empingham
Essendine	113	98	136	175	156	152	239	193	186	176	177	214	215	222	232	201	151	141	220	208	368	255			Essendine
Exton ³	678	787	692	735	751	881	832	805	756	652	651	642	613	524	561	635	703	617	558	580	600		-78	Exton	
Glaston	163	189	165	188	229	249	252	238	219	220	208	198	188	191	174	150	145	145	175	153	185	22			Glaston
Great Casterton	267	306	306	335	353	376	369	323	335	321	277	251	288	259	243	270	287	267	310	399	434	167			Great Casterton
Greetham	385	423	425	541	505	583	713	706	704	583	537	523	531	505	481	476	423	443	538	551	609	224			Greetham
Gunthorpe	9	7	8	7	4	8	8	11	17	23	24	18	40	25	35	34	33	33	30	28	19	10			Gunthorpe
Hambleton	335	336	296	308	297	325	290	323	305	245	235	244	241	224	211	199	171	136	120	152	140		-195	Hambleton	
Horn ⁴		14	27	10	18	38	27	30	21	33	23	17	42	26	25	174	13	11	2	10	9	9			Horn
Ketton	664	657	712	797	810	951	1138	1053	1115	1116	1035	1041	992	950	966	1117	1142	1434	1722	1663	1666	1002			Ketton
Langham	455	485	487	571	608	591	629	636	632	676	619	634	625	558	614	706	823	875	1092	1079	1042	587			Langham
Leighfield ⁵	46	49	23			43	40	32	40	34	42	24	35	32	32	26	14	12	12	10	10		-36	Leighfield	
Little Casterton	117	121	117	84	135	132	119	118	148	178	188	172	189	179	183	158	184	162	203	186	148	31			Little Casterton
Lyddington	568	527	495	594	534	589	604	613	592	546	447	359	366	322	290	309	286	305	363	387	397		-171	Lyddington	
Lyndon	89	93	97	106	102	100	106	126	111	103	112	114	97	103	89	74	79	107	87	82	80		-9	Lyndon	
Manton	206	187	205	229	229	272	276	274	251	312	321	264	291	242	238	241	301	321	310	354	364	158			Manton
Market Overton	395	419	387	468	470	503	498	429	417	388	351	294	403	319	329	369	409	375	463	425	494	99			Market Overton
Martinsthorpe	4	4	5	4	2	8	7	6	3	9	6	4	4	1	6	5	0	0	0	0	0		-4	Martinsthorpe	
Morcott	339	364	356	443	480	516	667	494	485	480	450	412	392	384	335	359	317	409	336	346	329		-10	Morcott	
Normanton	37	57	24	26	33	28	35	59	42	79	81	80	64	40	41	40	49	33	33	30	26		-11	Normanton	
North Luffenham	310	357	389	421	447	478	442	491	476	432	412	443	431	441	404	446	425	493	585	527	704	394			North Luffenham
Oakham ⁶	1617	1613	1541	2160	2386	2518	2820	2780	2911	3204	3542	3484	3667	3340	3191	3539	4089	6414	8035	9101	9975	8358			Oakham
Pickworth	97	116	131	140	140	132	157	151	218	169	171	145	154	116	120	88	90	54	55	77	81		-16	Pickworth	
Pilton	53	43	57	66	69	74	86	72	63	53	45	48	36	28	33	18	15	12	12	18	39		-14	Pilton	
Preston	274	266	262	295	352	371	328	349	330	273	286	250	243	263	202	215	183	185	174	171	179		-95	Preston	
Ridlington	179	178	222	247	262	299	316	282	256	234	233	187	221	158	154	178	180	161	167	166	202	23			Ridlington
Ryhall	447	501	462	439	569	678	1075	847	790	713	618	583	701	666	658	715	1052	1128	1678	1619	1644	1197			Ryhall
Seaton	330	358	356	377	346	362	398	345	324	319	264	240	198	190	188	169	148	156	179	162	178		-152	Seaton	
South Luffenham	207	227	231	274	273	317	437	400	359	344	309	290	329	317	328	311	295	347	433	436	432	225			South Luffenham
Stoke Dry	62	61	57	52	50	49	54	44	45	60	49	55	61	54	32	34	29	34	50	35	35		-27	Stoke Dry	
Stretton	172	152	174	195	208	220	241	189	173	196	194	171	170	141	157	246	97	86	104	557	770	598			Stretton
Teigh	132	133	133	178	176	235	147	128	113	132	123	108	110	86	78	73	89	71	62	43	48		-84	Teigh	
Thistleton	132	143	150	181	151	161	142	142	142	133	112	98	114	105	82	81	94	93	107	103	99		-33	Thistleton	
Thorpe by Water	108	100	69	80	89	84	113	77	68	63	87	67	48	29	49	34	35	24	26	37	56		-52	Thorpe by Water	
Tickencote	94	98	100	126	128	111	98	104	100	103	118	109	110	107	113	87	77	81	74	48	67		-27	Tickencote	
Tinwell	202	230	228	245	262	258	287	235	249	224	231	222	218	223	220	234	238	296	277	221	209	7			Tinwell
Tixover	54	59	85	108	100	102	115	129	95	86	86	68	49	48	23	120	61	42	105	86	174	120			Tixover
Uppingham ⁷	1355	1393	1484	1630	1757	2034	2068	2186	2601	2549	2559	2588	2573	2453	1703	1868	1940	3067	2839	3729	3947	2592			Uppingham
Wardley	50	52	63	52	50	59	59	68	58	48	45	45	43	18	28	28	22	24	25	22	32		-18	Wardley	
Whissendine	530	555	555	701	800	831	795	693	759	732	723	670	673	566	595	693	612	821	1214	1143	1189	659			Whissendine
Whitwell	70	80	114	112	124	139	129	104	100	109	108	81	78	84	76	66	51	38	47	44	41		-29	Whitwell	
Wing	244	246	249	273	307	302	334	342	308	320	353	311	297	275	236	277	242	254	309	305	315	71			Wing
County	15714	16300	16380	18487	19385	21302	22983	21861	22073	21434	20659	19720	20346	18403	17401	20537	23504	27467	30810	32535	34563	18263			County

1. Barleythorpe: 1795, 1801, 1821, 1831, 1881-1901, included with Oakham.

2. Beaumont Chase: 1795, 1801-1831, included with Uppingham.

3. Exton: 1795, probably included Horn.

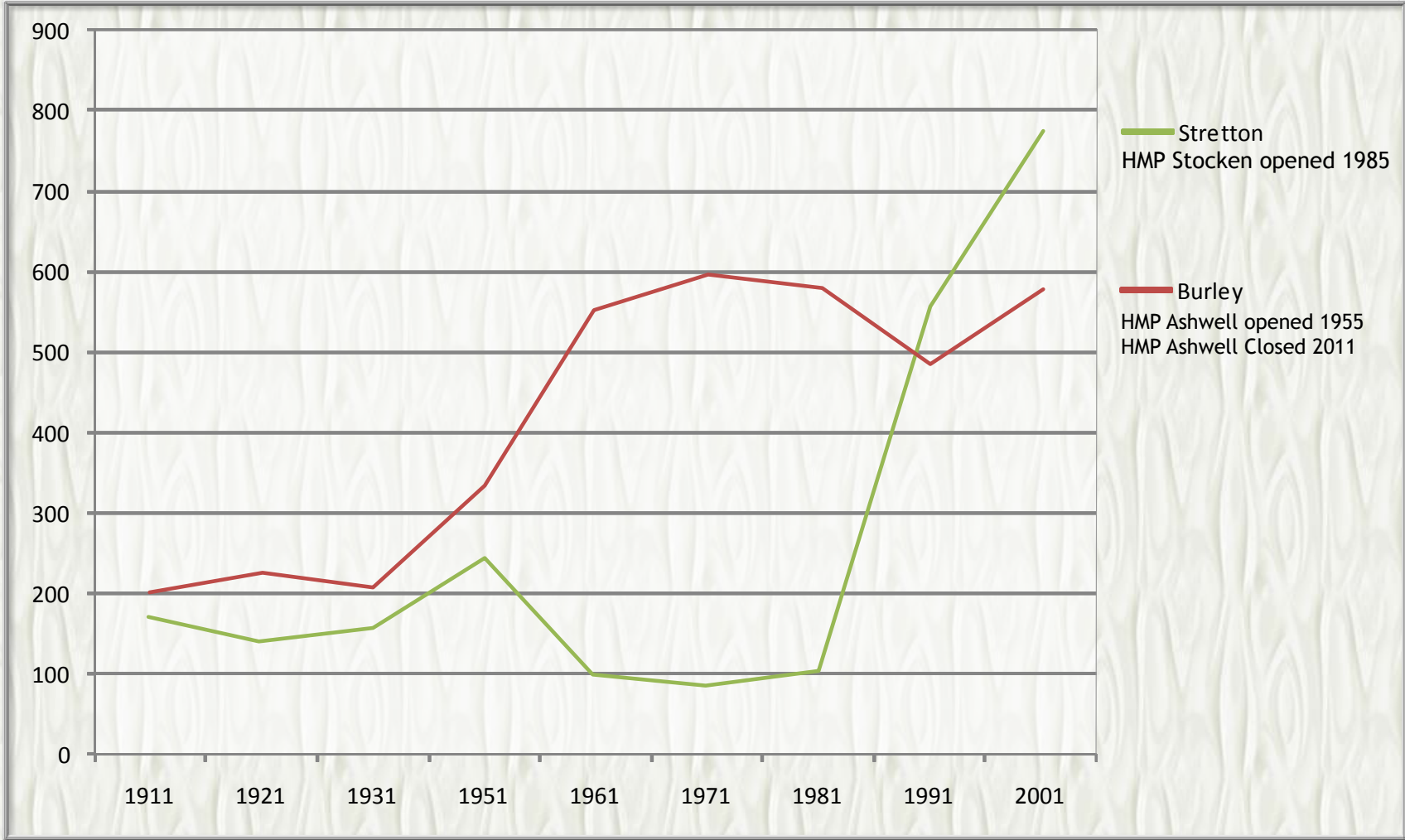
4. Horn: 1795, probably included with Exton.

5. Leighfield: 1821, 1831, included with Oakham.

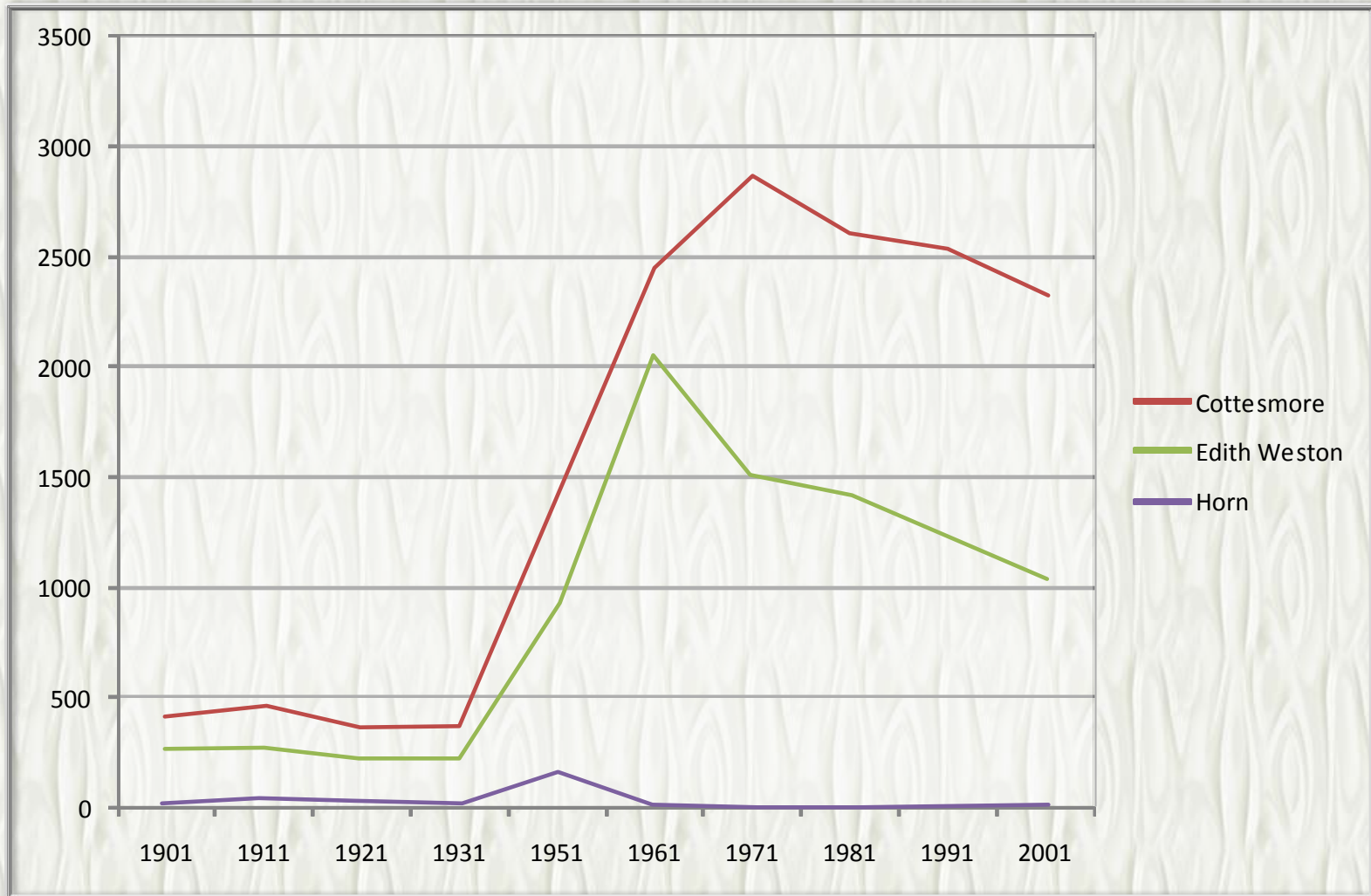
6. Oakham: 1795, 1801, 1821, 1831, 1881-1901, included Barleythorpe - 1821, 1831, included Leighfield.

	1795 - 2001		1901 - 2001		1795 - 2001		1901 - 2001	
	Population		Population		Percentage		Percentage	
	Increase	Decrease	Increase	Decrease	Increase	Decrease	Increase	Decrease
Ashwell	117		65		68%		29%	
Ayston		-48		-24		-52%		-34%
Barleythorpe	178		178		115%		111%	
Barrow		-43		-43		-33%		-39%
Barrowden		-68		-20		-13%		-5%
Beaumont Chase		0		-15		0%		-100%
Belton		-80	21			-19%	7%	
Bisbrooke		-1	7			0%	3%	
Braunston	19		18		5%		5%	
Brooke		-32		-20		-32%		-23%
Burley	362		343		168%		147%	
Caldecott		-57		-17		-18%		-6%
Clipsham		-48		-30		-29%		-20%
Cottesmore	1966		1910		537%		453%	
Edith Weston	792		775		317%		290%	
Eggleton		-65		-34		-45%		-30%
Empingham	110		161		16%		25%	
Essendine	255		154		226%		72%	
Exton		-78		-42		-12%		-7%
Glaston	22			-13	13%			-7%
Great Casterton	167		183		63%		73%	
Greetham	224		86		58%		16%	
Gunthorpe	10				111%			
Hambleton		-195		-104		-58%		-43%
Horn	9			-8	64%			-47%
Ketton	1002		625		151%		60%	
Langham	587		408		129%		64%	
Leighfield		-36		-14		-78%		-58%
Little Casterton	31			-24	26%			-14%
Lyddington		-171	38			-30%	11%	
Lyndon		-9		-34		-10%		-30%
Manton	158		100		77%		38%	
Market Overton	99		200		25%		68%	
Martinsthorpe		-4		-4		-100%		-100%
Morcott		-10		-83		-3%		-20%
Normanton		-11		-54		-30%		-68%
North Luffenham	394		261		127%		59%	
Oakham	8358		6491		517%		186%	
Pickworth		-16		-64		-16%		-44%
Pilton		-14		-9		-26%		-19%
Preston		-95		-71		-35%		-28%
Ridlington	23		15		13%		8%	
Ryhall	1197		1061		268%		182%	
Seaton		-152		-62		-46%		-26%
South Luffenham	225		142		109%		49%	
Stoke Dry		-27		-20		-44%		-36%
Stretton	598		599		348%		350%	
Teigh		-84		-60		-64%		-56%
Thistleton		-33	1			-25%	1%	
Thorpe by Water		-52		-11		-48%		-16%
Tickencote		-27		-42		-29%		-39%
Tinwell	7			-13	3%			-6%
Tixover	120		106				156%	
Uppingham	2592		1359		191%		53%	
Wardley		-18		-13		-36%		-29%
Whissendine	659		519		124%		77%	
Whitwell		-29		-40		-41%		-49%
Wing	71		4		29%		1%	
County	18849		14843		120%		75%	

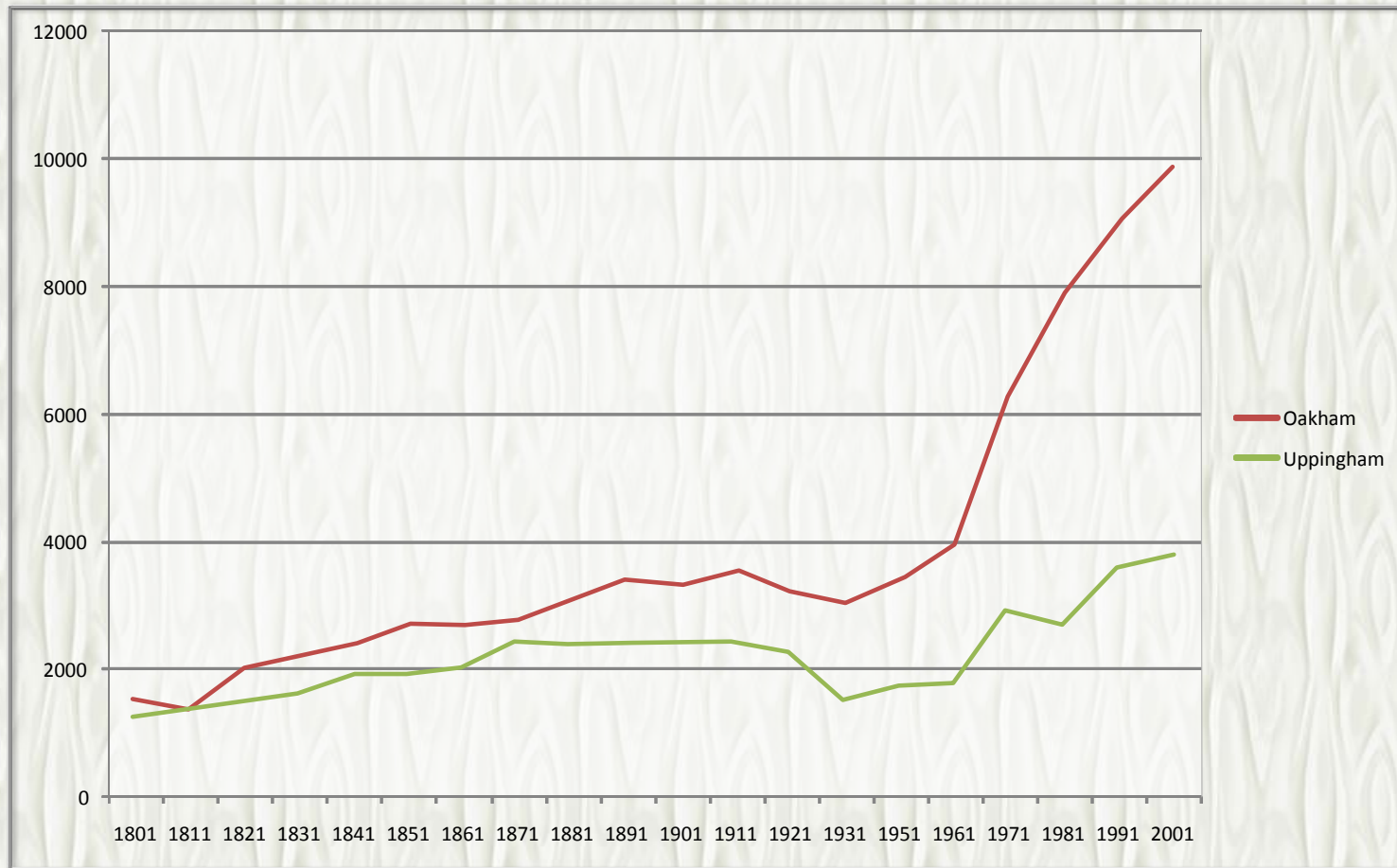
Burley & Stretton



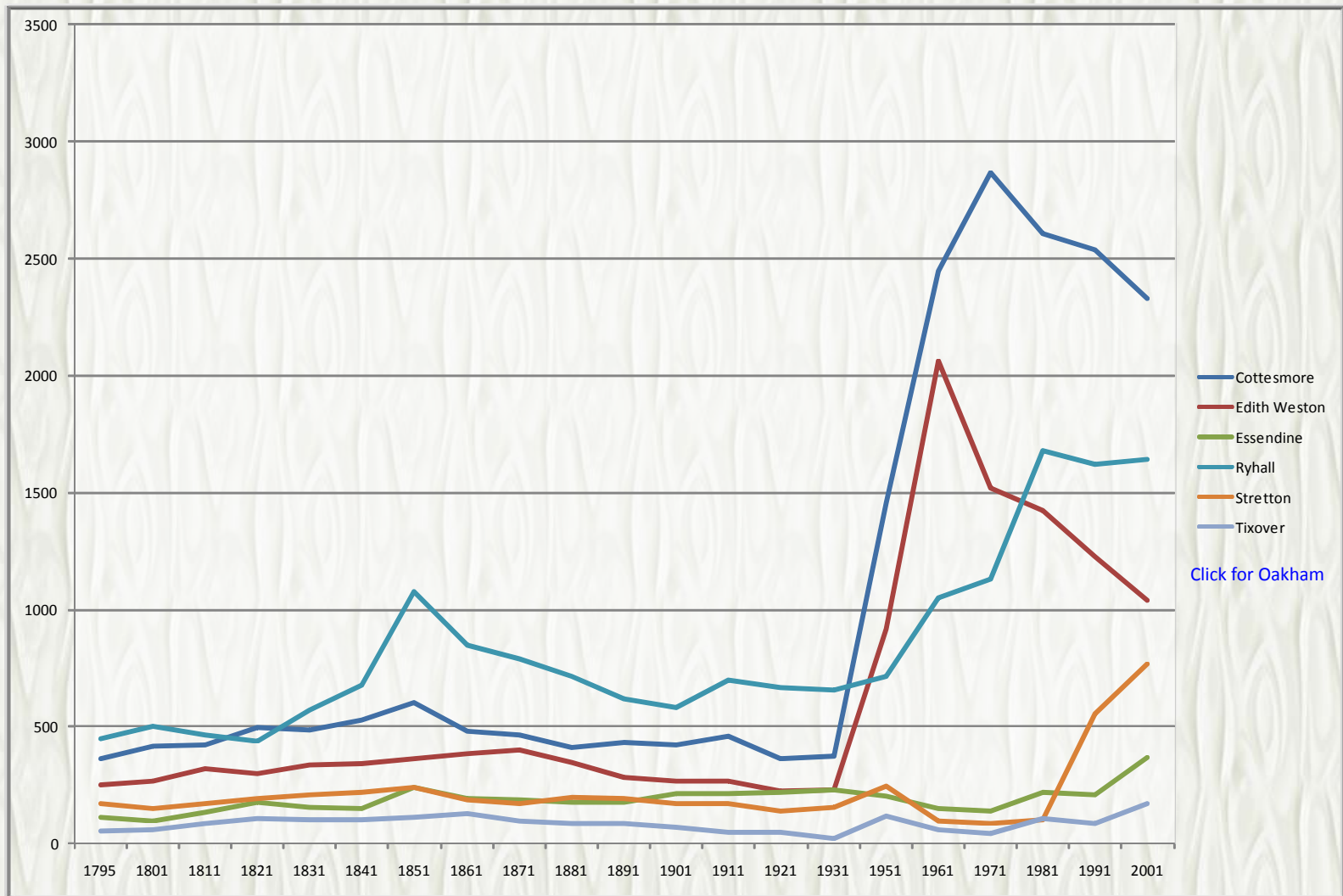
Cottesmore, Edith Weston & Horn



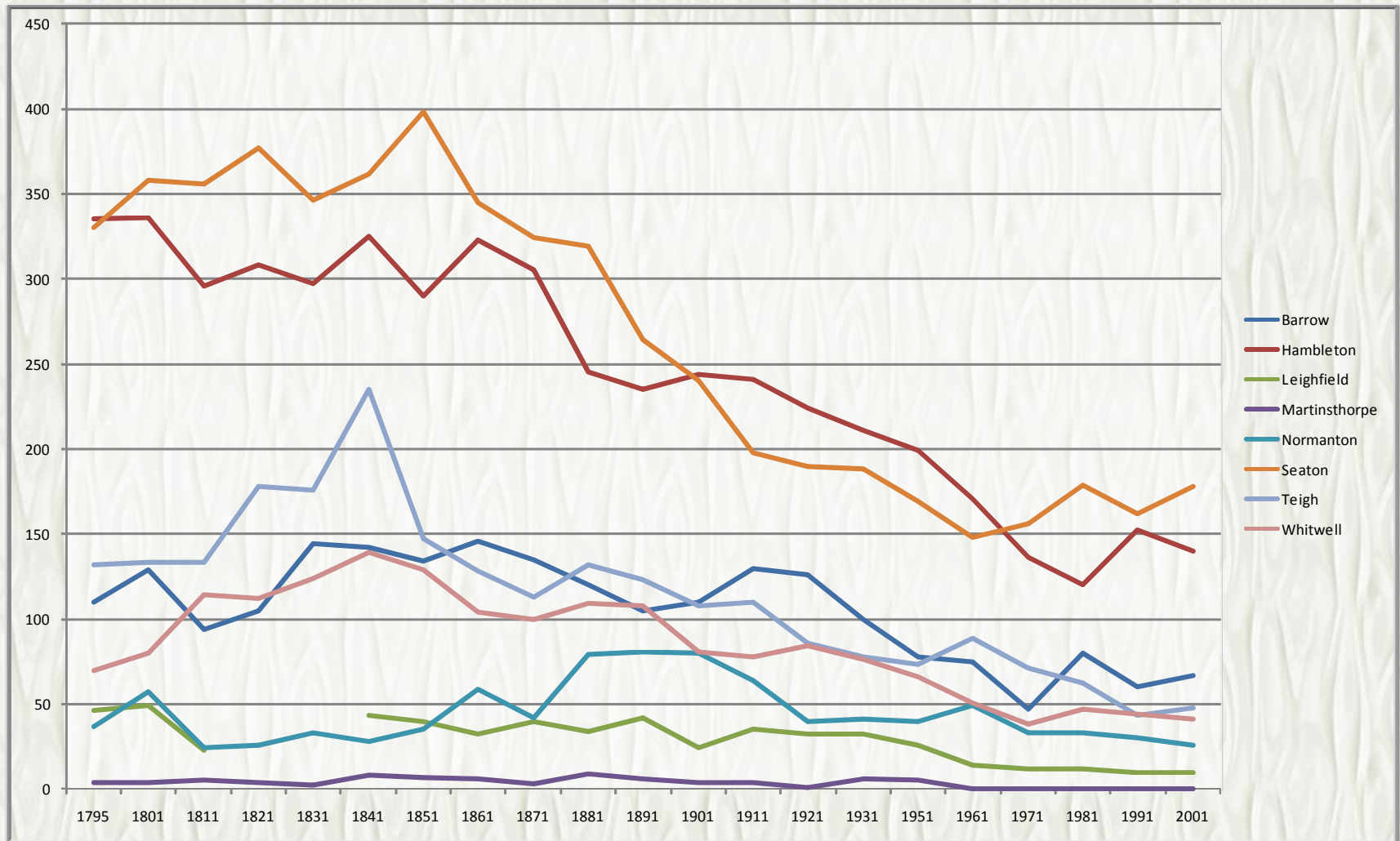
Oakham & Uppingham Population 1801 - 2001



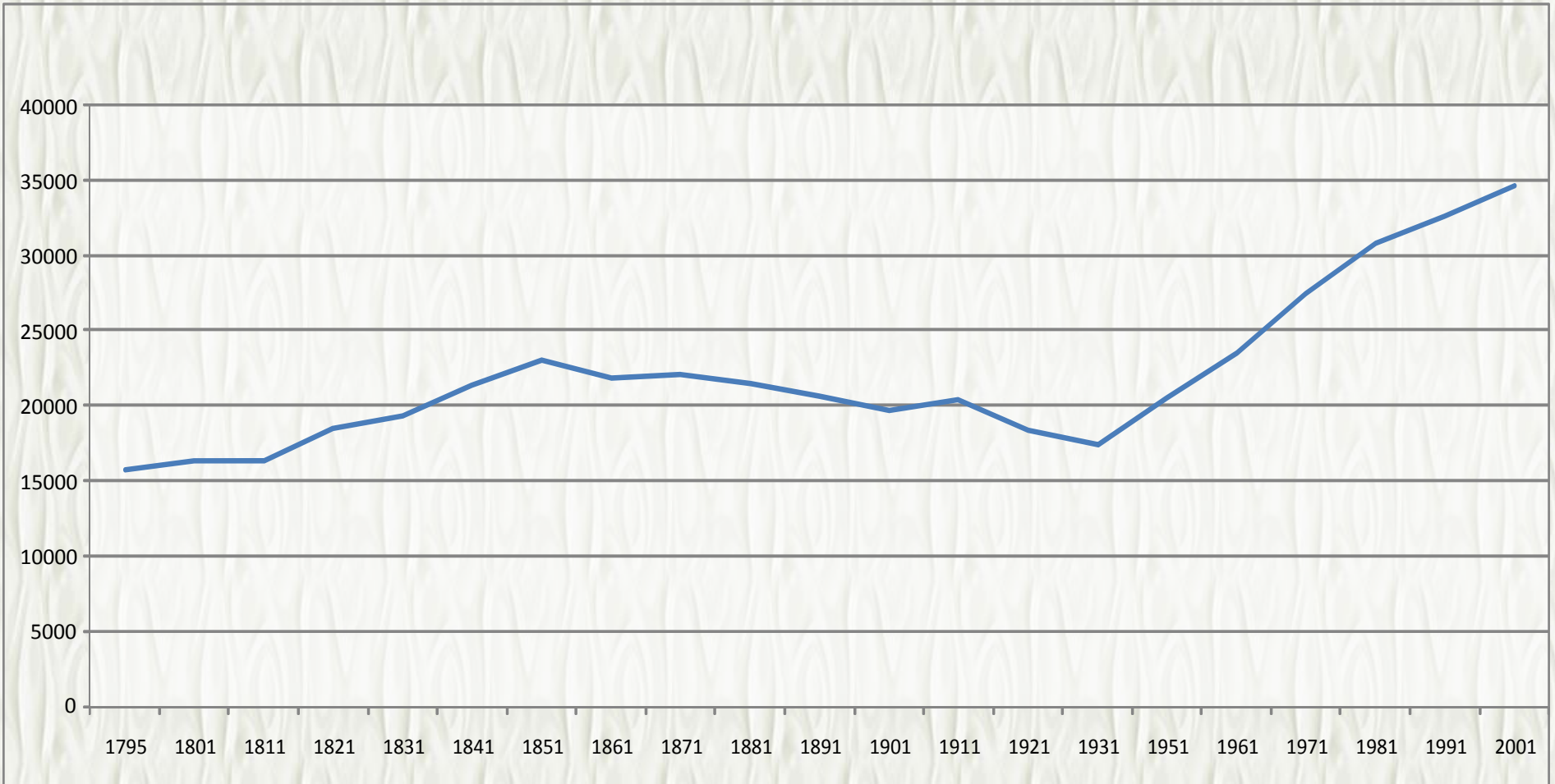
Parishes which experienced an increase in population of over 200%



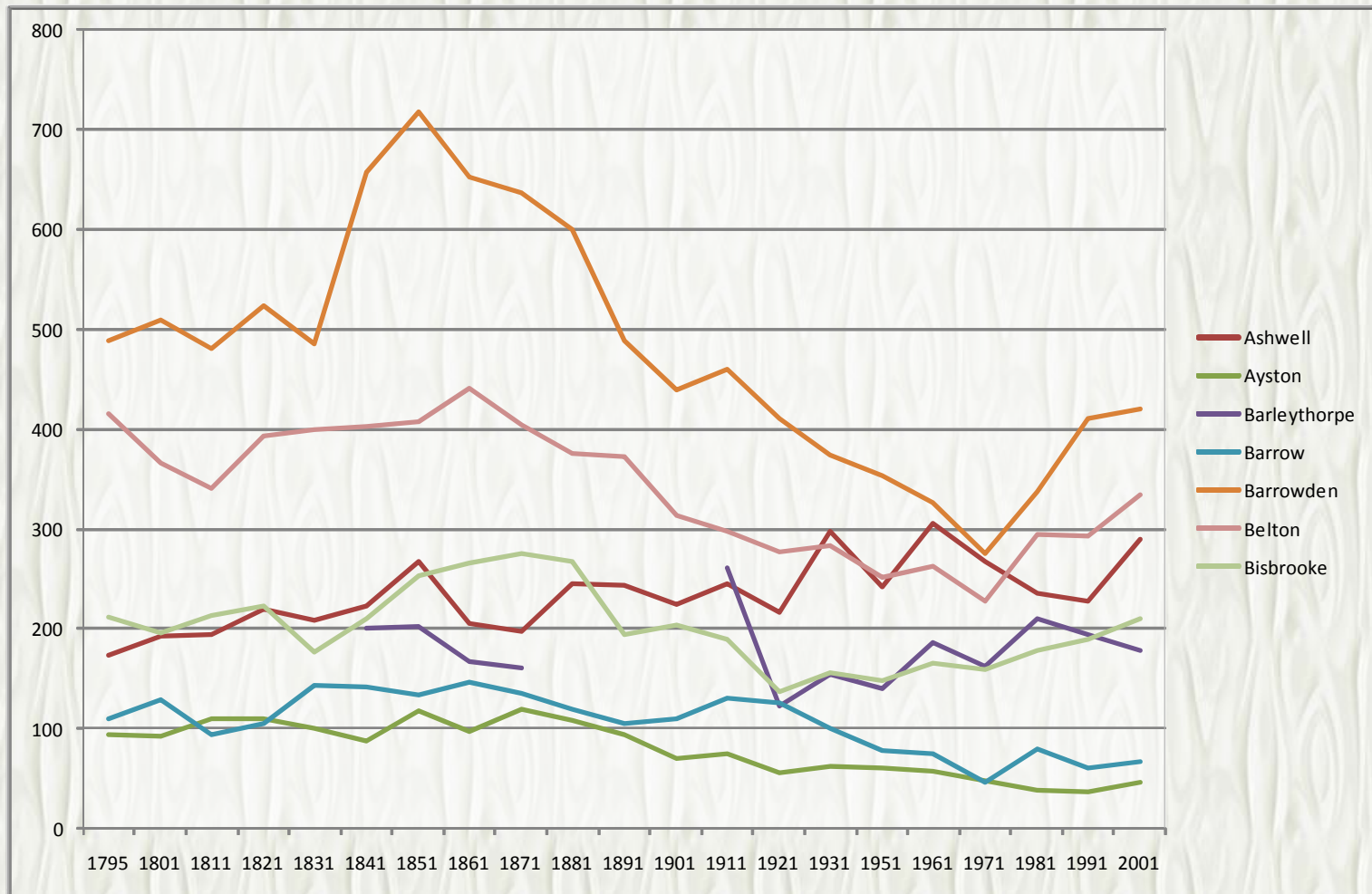
Parishes which show a reduction in the population of over 50%



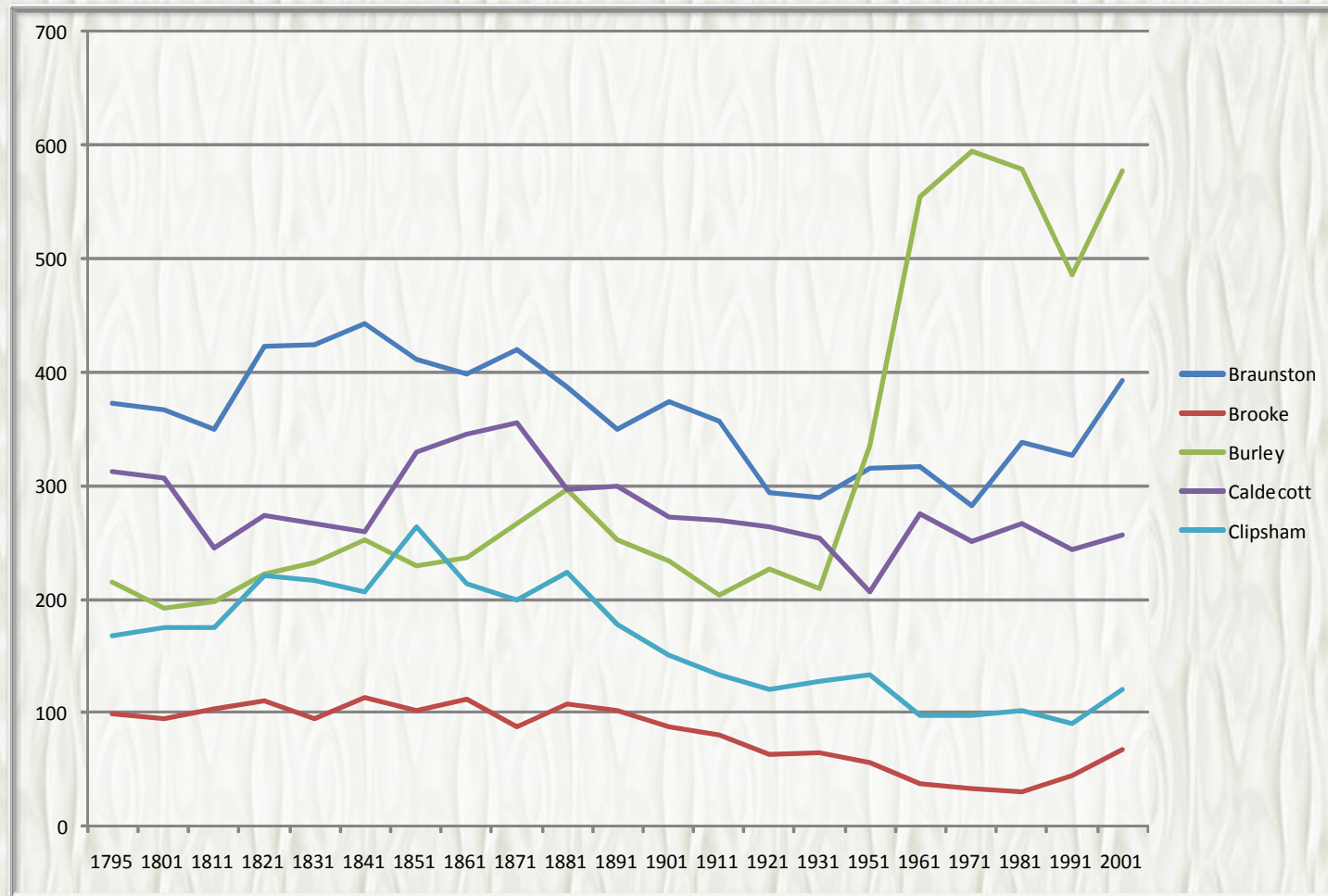
Rutland Population 1795 - 2001



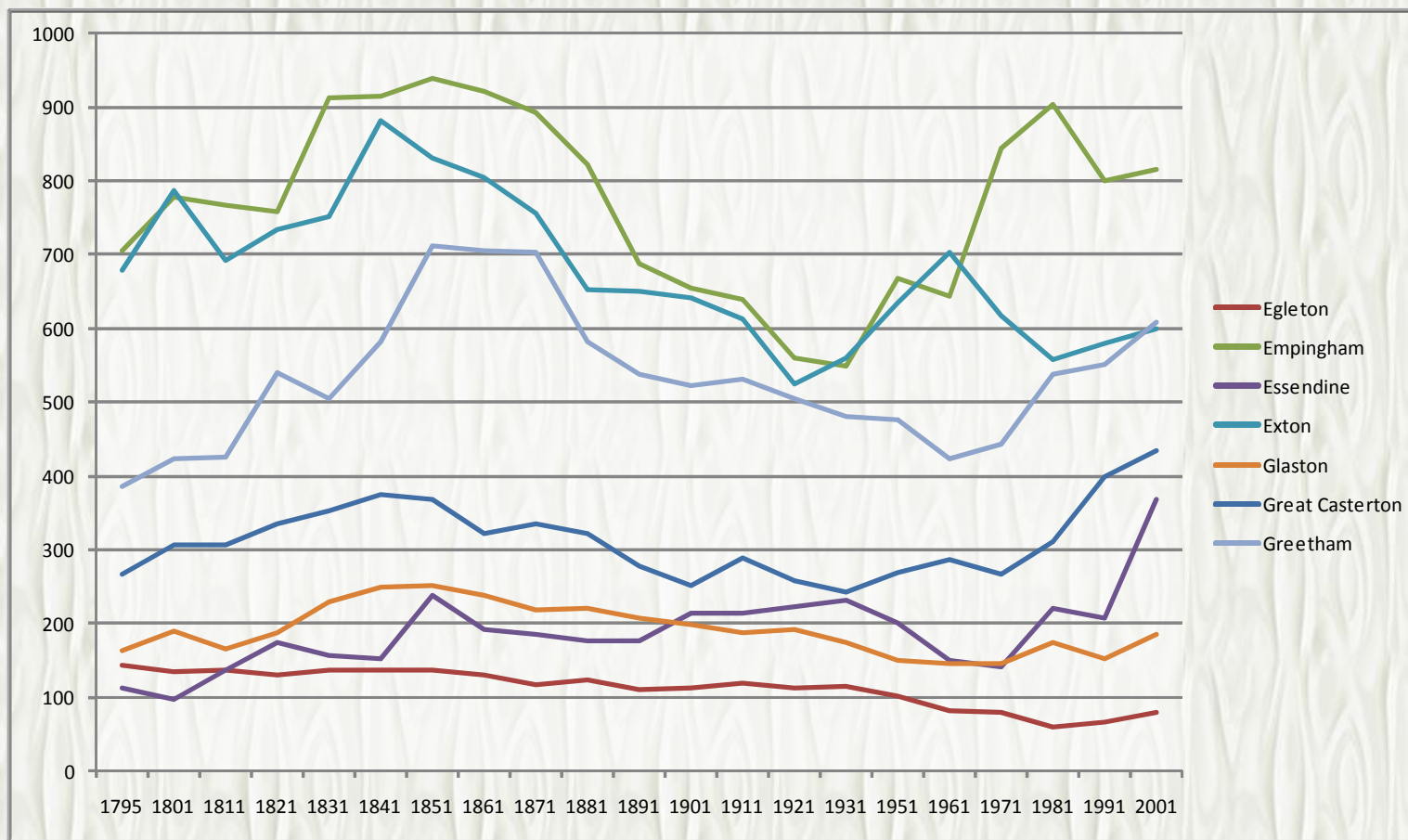
Population Graph for Ashwell, Ayston, Barleythorpe, Barrow, Barrowden, Belton & Bisbrooke



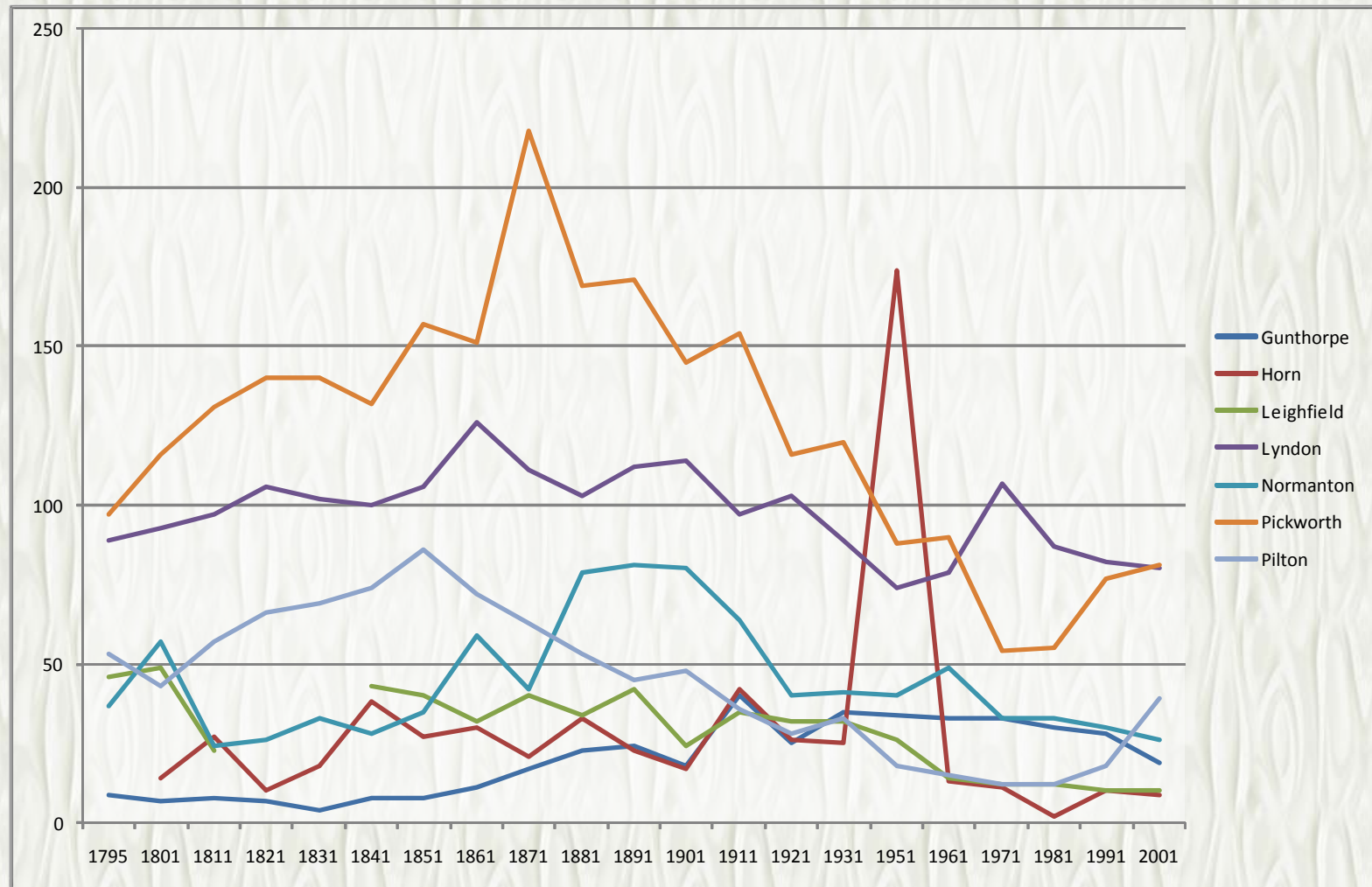
Population Graph for Braunston, Brooke, Burley, Caldecott & Clipsham



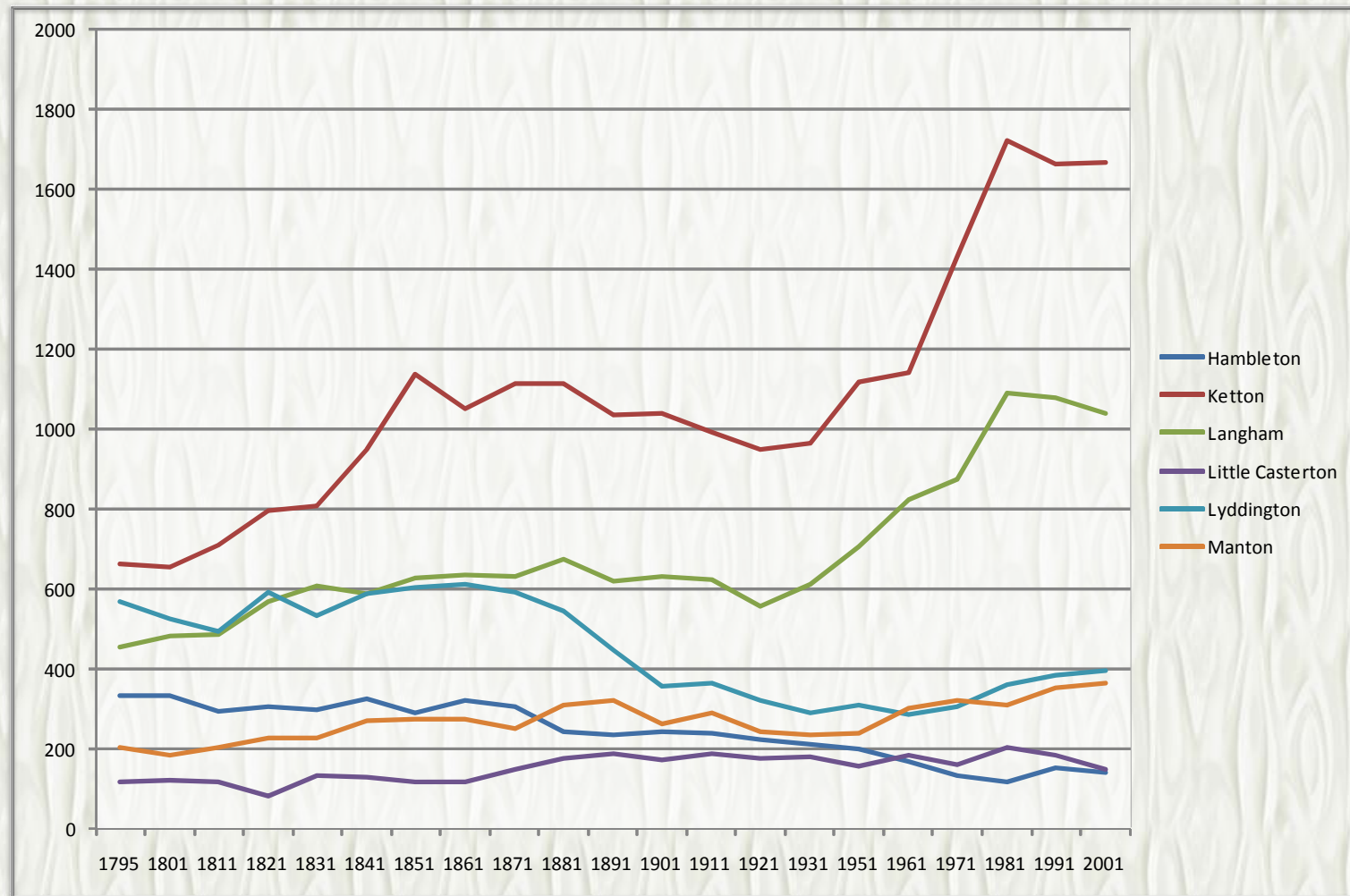
Population Graph for Egleton, Empingham, Essendine, Exton, Glaston, Great Casterton & Greetham



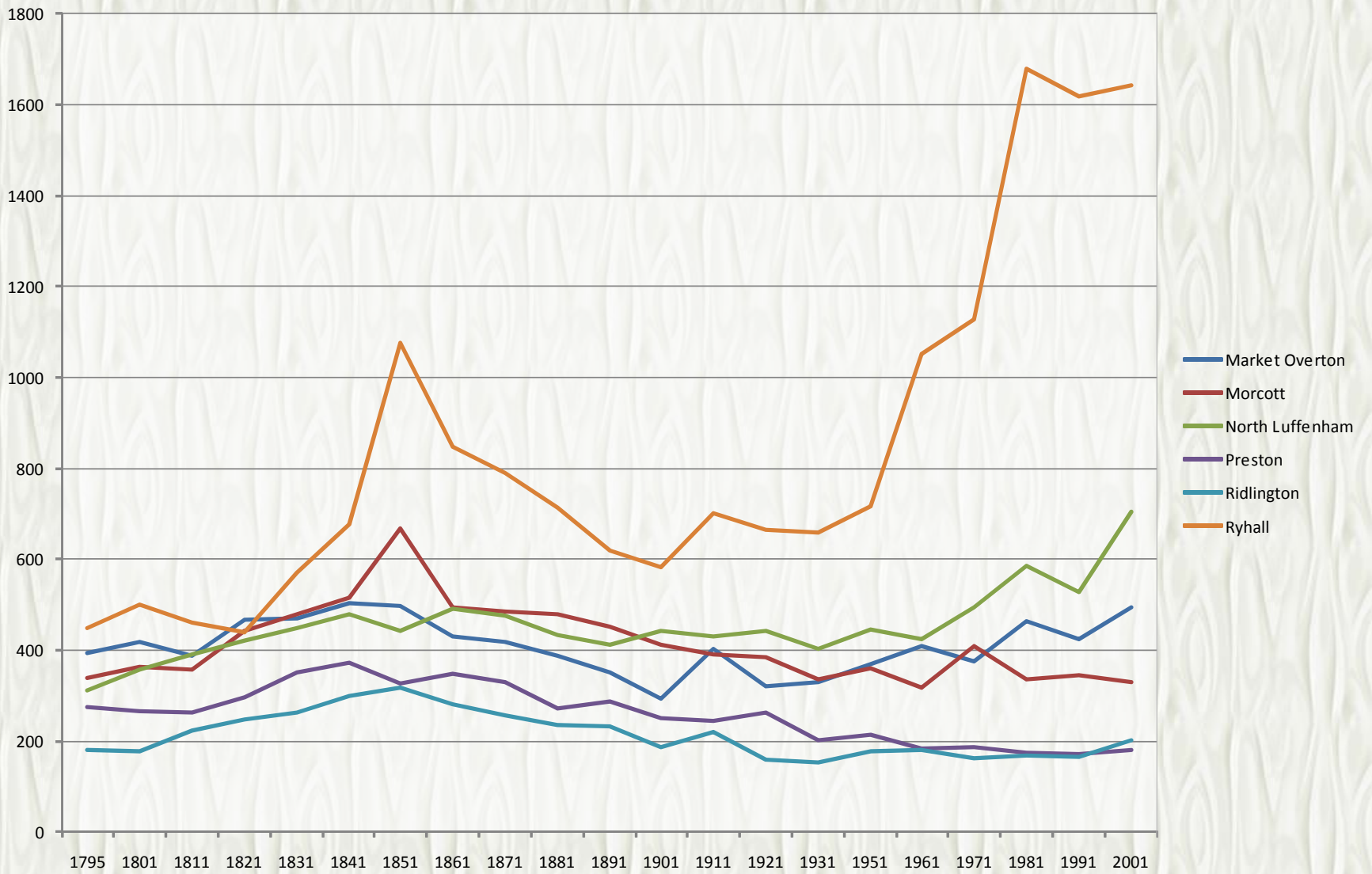
Population Graph for Gunthorpe, Horn, Leighfield, Lyndon, Normanton, Pickworth & Pilton



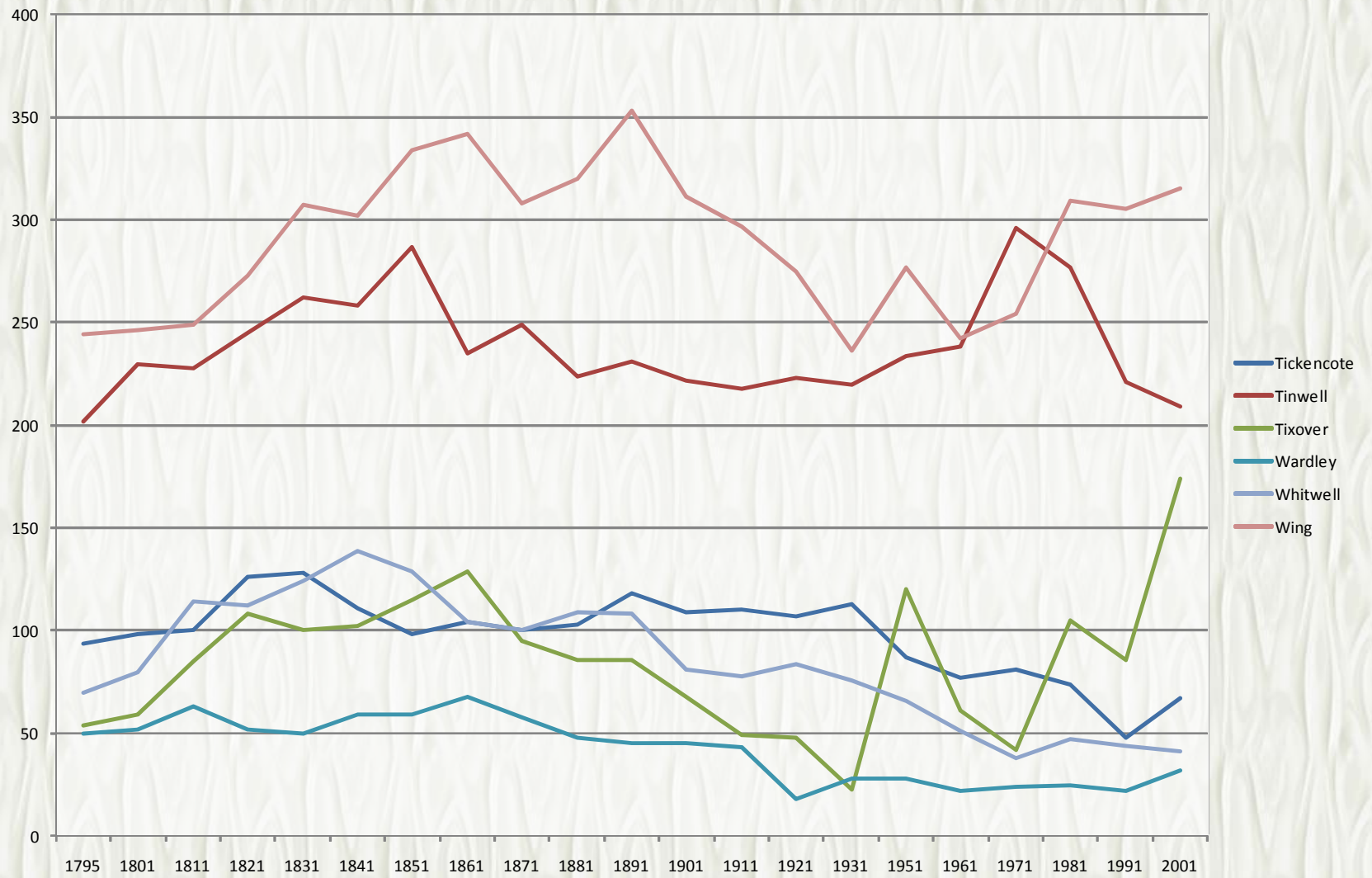
Population Graph for Hambleton, Ketton, Langham, Little Casterton, Lyddington & Manton



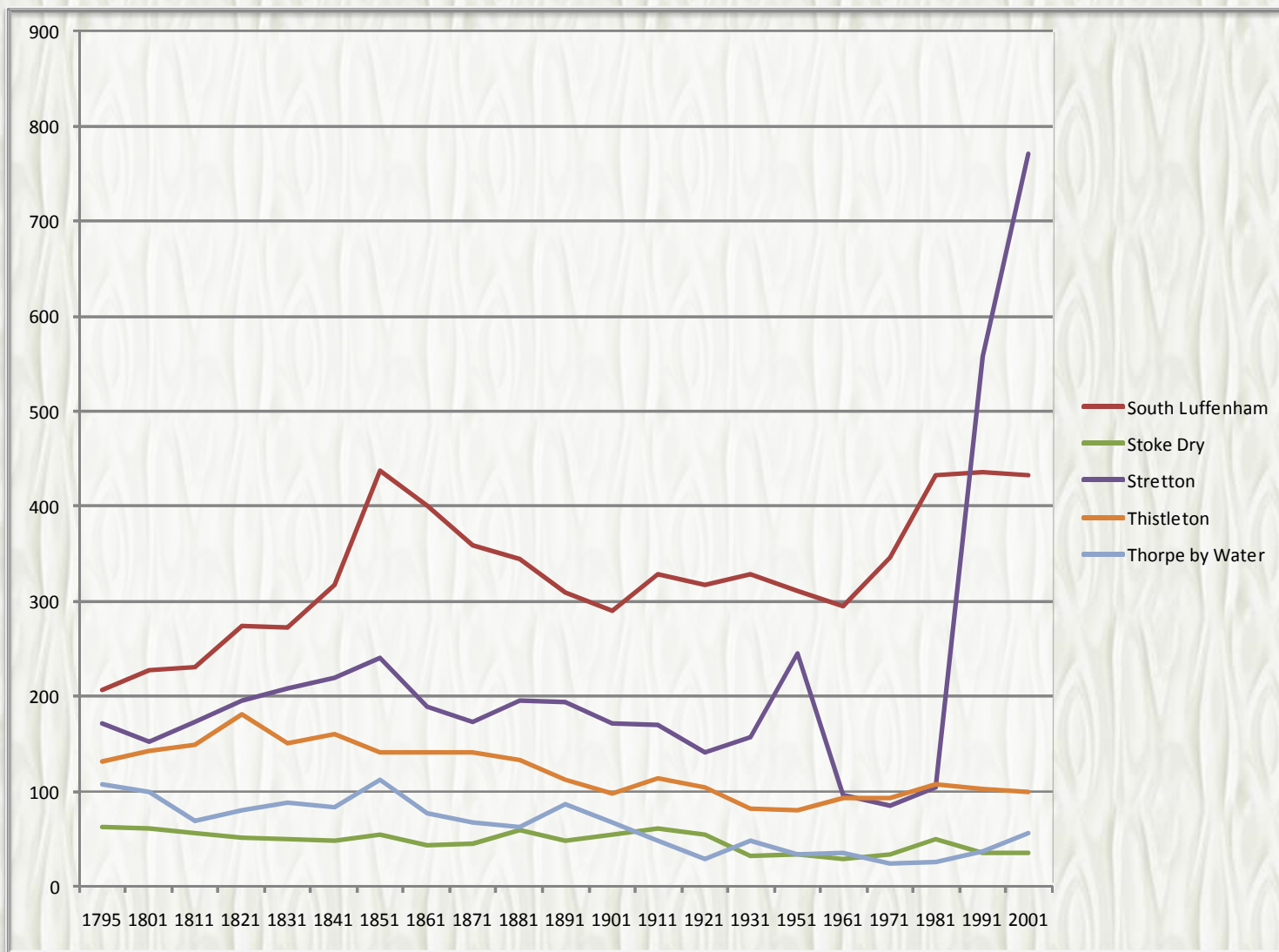
Population Graph for Market Overton, Morcott, North Luffenham, Preston, Ridlington & Ryhall



Population Graph for Tickencote, Tinwell, Tixover, Wardley, Whitwell & Wing



Population Graph for South Luffenham, Stoke Dry, Stretton, Thistleton & Thorpe by Water



Population Graph for Manton, North Luffenham & Whissendine

